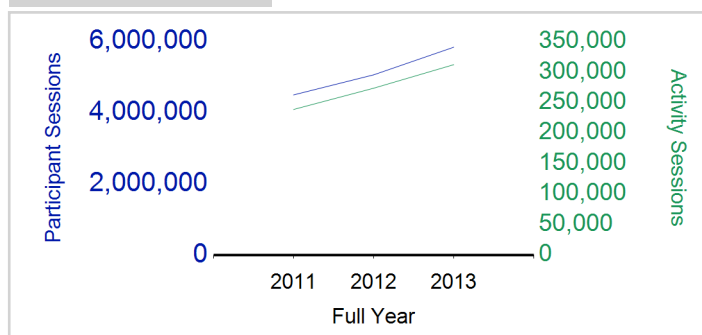


Term Report: National

Academic Year : 2013/2014, Term(s) : Full Year

Putting Sport First

sportscotland
 the national agency for sport
Participant Sessions¹

	2011 Full Year	2012 Full Year	2013 Full Year
Activity Sessions	238,514	273,405	312,043
% Purely voluntary	65%	66%	67%
Activity Session Blocks ²	28,263	32,551	36,765
Avg Activity Sessions / Blocks ³	8.4	8.4	8.5
Different Activities	109	113	111
Participant Sessions¹	4,498,837	5,062,805	5,840,036
% Female	46%	46%	46%
Distinct Deliverers⁴	15,792	19,321	19,180
% Volunteers	84%	85%	84%
Qualified Volunteers	7,694	9,405	8,932
Secondary Pupils	2,803	3,506	3,785
Total Deliverer Sessions ⁵	440,338	495,985	568,475
Avg Deliverers Sessions / Deliverer	27.9	25.7	29.6
School Club Links	14,538	18,241	21,226
Schools with at least 1 link	2,404	2,440	2,456
Clubs with at least 1 link	2,225	2,423	2,579

1. Participant Sessions are the 'visits' pupils have made to activities. These figures do not represent the distinct pupils, and should only be taken as indicative of participation

2. Activities are recorded in ASMO as 'Activity Session Blocks' which describe a group who meet to take part in an activity.

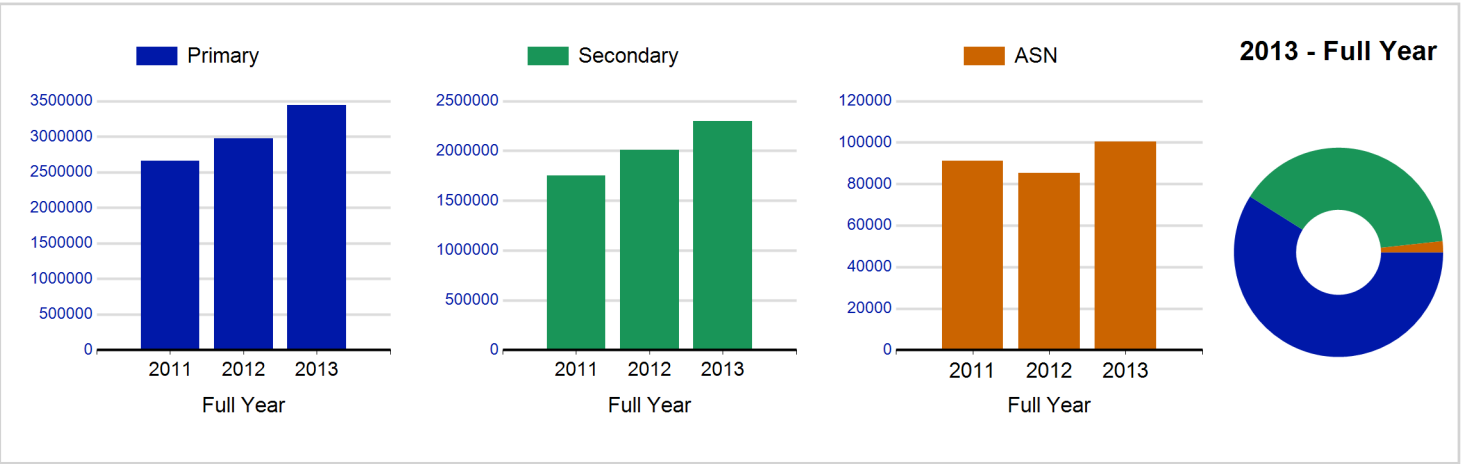
3. The Average Activity Sessions/Block figure shows the average length of a block (i.e. how many weeks did the average block run for?)

4. Distinct Deliverers are deliverers who have delivered at least one session of Active Schools supported activity across the selected year/term.

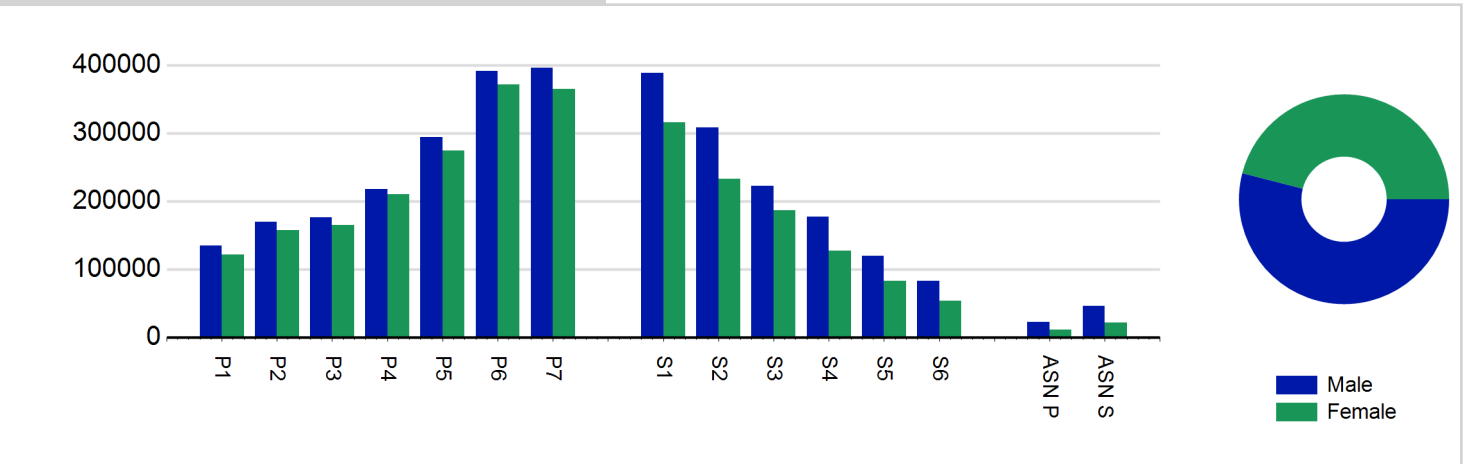
5. Deliverer Sessions are the 'visits' deliverers have made to activities. These figures do not represent the distinct deliverers, and should only be taken as indicative of delivery. Distinct deliverer information is only available at the local authority level.

6. Figures with N/A are not available for the 2008-11 phase of Active Schools. Charts which refer to information pre 2011 will show a huge increase from 0 – this is because we cannot include any 2008-2011 data at this level.

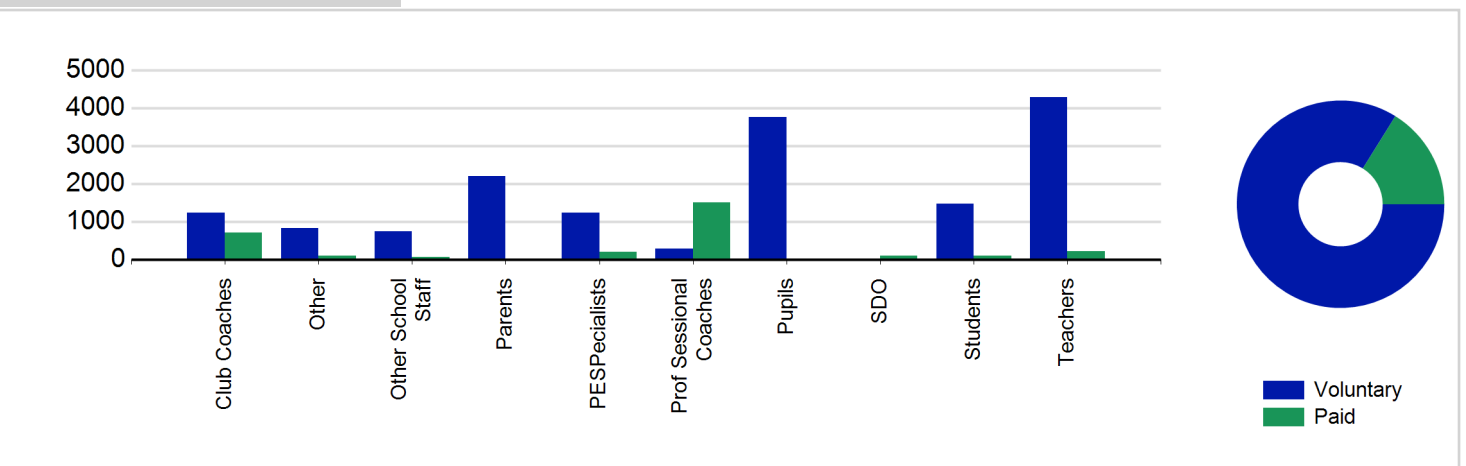
Participant Sessions¹ by School Type



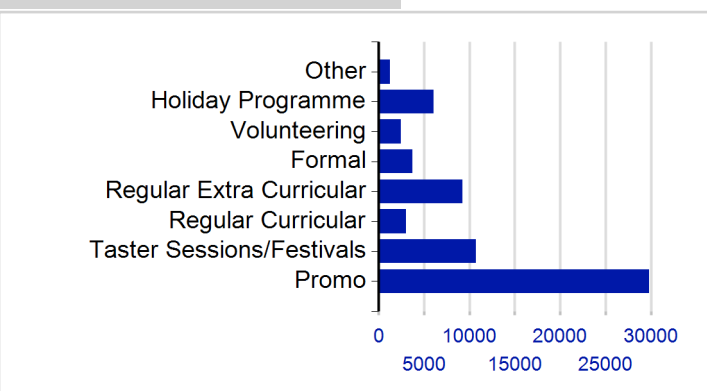
Participant Sessions¹ by Year Group and Gender



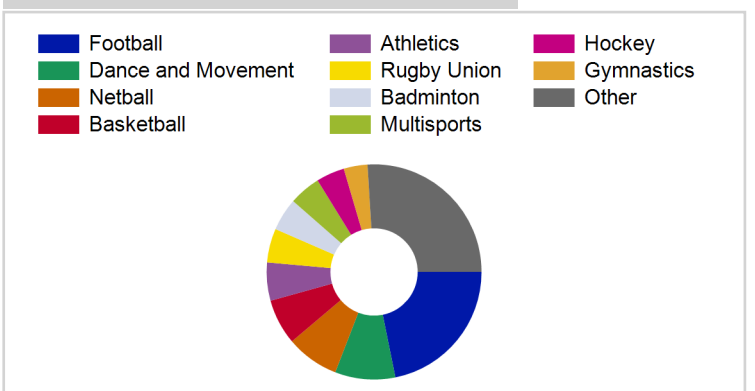
Distinct Deliverers⁴



School/Club Links



Top 10 Activities by Participant Sessions¹



Term Report: National

Academic Year : 2013/2014, Term(s) : Full Year

Putting Sport First

sportscotland
the national agency for sport

Participant Sessions¹ by Yeargroup and Gender

	Male	Female
P1	134,566	120,961
P2	169,298	157,418
P3	176,307	164,523
P4	217,881	210,331
P5	294,178	274,284
P6	391,697	371,313
P7	395,556	364,991
S1	388,174	315,688
S2	308,114	233,163
S3	222,393	186,679
S4	177,437	126,744
S5	119,735	82,870
S6	82,337	53,042
ASN P	22,062	11,005
ASN S	46,302	20,987
Total	3,146,037	2,693,999

Distinct Deliverers⁴ byType

	Paid	Voluntary
Parents	18	2,204
Teachers	221	4,290
PESpecialists	209	1,242
Other School Staff	70	745
Club Coaches	719	1,231
Prof Sessional Coaches	1,511	298
Students	107	1,484
Pupils	28	3,757
SDO	100	0
Other	113	833
Total	3,096	16,084